

PLUMBING PLAN
SCALE: 1/4" = 1'-0"

SHEET NO. A-5	MODEL PISA TORRE	SET NO. PS100	REMARKS
	DRAWING TITLE PLUMBING PLAN	VERSION 02	
OPTION DESCRIPTION 31	OPTION	DATE:	<p>© NVR, Inc. expressly reserves the right to modify or amend these plans at any time without notice. These plans are not to be reproduced, changed or altered in any way without the written consent of NVR, Inc.</p>
	OPTION	DATE:	



FIRST FLOOR JACK SCHEDULE				
IDENTIFIER	DESCRIPTION	OPTIONS	ENG. NUM.	REMARKS
J01	JACK - (2) 2X4 SPF STUD GRADE		1051 / 1050	
J02	JACK - (2) 2X4 SPF STUD GRADE		1051 / 1050	
J03	JACK - (5) 2X4 SP#1	SXC	1051	STEEL PLATE
J04	JACK - (5) 2X4 SP#1	SXC	1051	STEEL PLATE
J07	JACK - (3) 2X4 SPF STUD GRADE	BTU / SXC	1004	
J08	JACK - (3) 2X4 SPF STUD GRADE	BTU / SXC	1004	
J31	JACK - (2) 2X4 SPF STUD GRADE	ZUD / BTU / SXC	1035	
J32	JACK - (2) 2X4 SPF STUD GRADE	ZUD / BTU / SXC	1035	
J34	JACK - (3) 2X4 SPF STUD GRADE	ZUD / BTU / SXC	1029 / 1050	
J46	JACK - (5) 2X4 SP#1	EDI / SXC	1051	STEEL PLATE
J47	JACK - (5) 2X4 SP#1	EDI / SXC	1051	STEEL PLATE
J54	JACK - (3) 2X6 SPF STUD GRADE	EES / SXC	1050	STEEL PLATE
J55	JACK - (5) 2X4 SP#1	EES / SXC	1050	STEEL PLATE
J62	JACK - (3) 2X4 SPF STUD GRADE	BTU	1050	
J64	JACK - (4) 2X6 SPF STUD GRADE	GCB / BTU / SXC	1008	
J70	JACK - (2) 2X6 SPF STUD GRADE	GCB / BTU / SXC	1050	
J71	JACK - (2) 2X6 SPF STUD GRADE	GCB / BTU / SXC	1050	
J72	JACK - (4) 2X6 SPF STUD GRADE	GCB / BTU / SXC	1008	

LEGEND	
	BEARING WALL
	NON BEARING WALL
	INDICATES BEARING FROM POINT-LOAD ABOVE
	JACKS
	BEAM/HEADER
	PAD FOOTING
	STEEL COLUMN
	PORTAL FRAME
	JOIST/TRUSS
	LVL
	ENGINEERING PAGE NUMBER

SEE FC DETAILS FOR FRAMING CONNECTORS

LVL PLY TO PLY FASTENING SCHEDULE:

1.A - (2) PLY UP TO AND INCLUDING 11 7/8" TALL; FASTEN PLYS W/ (2) ROWS 16D NAILS AT 12" O.C.
 2.A - (2) PLY 14" TO AND 18" TALL (INCLUSIVE); FASTEN PLYS W/ (3) ROWS 16D NAILS AT 12" O.C.
 3.A - (2) PLY 20" TALL AND OVER; FASTEN PLYS W/ (4) ROWS 16D NAILS AT 12" O.C.
 4.A - (3) PLY UP TO AND INCLUDING 11 7/8" TALL; FASTEN PLYS W/ (2) ROWS 16D NAILS AT 12" O.C. FROM EACH SIDE
 5.A - (3) PLY 14" TO AND 18" TALL (INCLUSIVE); FASTEN PLYS W/ (3) ROWS 16D NAILS AT 12" O.C. FROM EACH SIDE
 6.A - (3) PLY 20" TALL AND OVER; FASTEN PLYS W/ (4) ROWS 16D NAILS AT 12" O.C. FROM EACH SIDE

FIELD INSTALLED FIRST FLOOR BEAM/HEADER SCHEDULE

IDENTIFIER	DESCRIPTION	LENGTH	OPTIONS	ENG. NUM.	REMARKS
PF02-3	LVL - 1B	19'-4"	GCB / BTU / SXC	1008	3 PLY, 5A

FLOOR PLAN NOTES

- ALL HEADERS ARE (2) 2x6 W/ 2x4 WALLS OR (3) 2x6 W/ 2x6 WALLS, UNLESS OTHERWISE NOTED.
- ALL HEADERS TO HAVE (1) 2x4 OR 2x6 JACK EACH END, UNLESS OTHERWISE NOTED.
- ALL EXTERIOR WALLS TO BE 4" AND ALL INTERIOR WALLS TO BE 3 1/2", UNLESS OTHERWISE NOTED.
- HATCHED AREAS INDICATE DROPPED CEILINGS. ALL DROPPED CEILINGS ARE 12' UNLESS OTHERWISE NOTED.
- SEE "BRACED WALL PANEL DETAIL SHEET" FOR SPECIAL WALL FRAMING LOCATIONS AND HEADER SIZES, IF APPLICABLE.
- SEE STANDARD DETAIL CATEGORY "IT" SHEET(S) FOR INTERIOR TRIM DETAILS.
- SEE ARCHITECTURAL DETAIL SHEET "AD" FOR HOUSE SPECIFIC INTERIOR TRIM OPTION TABLE.
- ALL WINDOWS HAVE T-0 1/2" HEADER HEIGHT UNLESS OTHERWISE NOTED.

GYPSUM NOTES

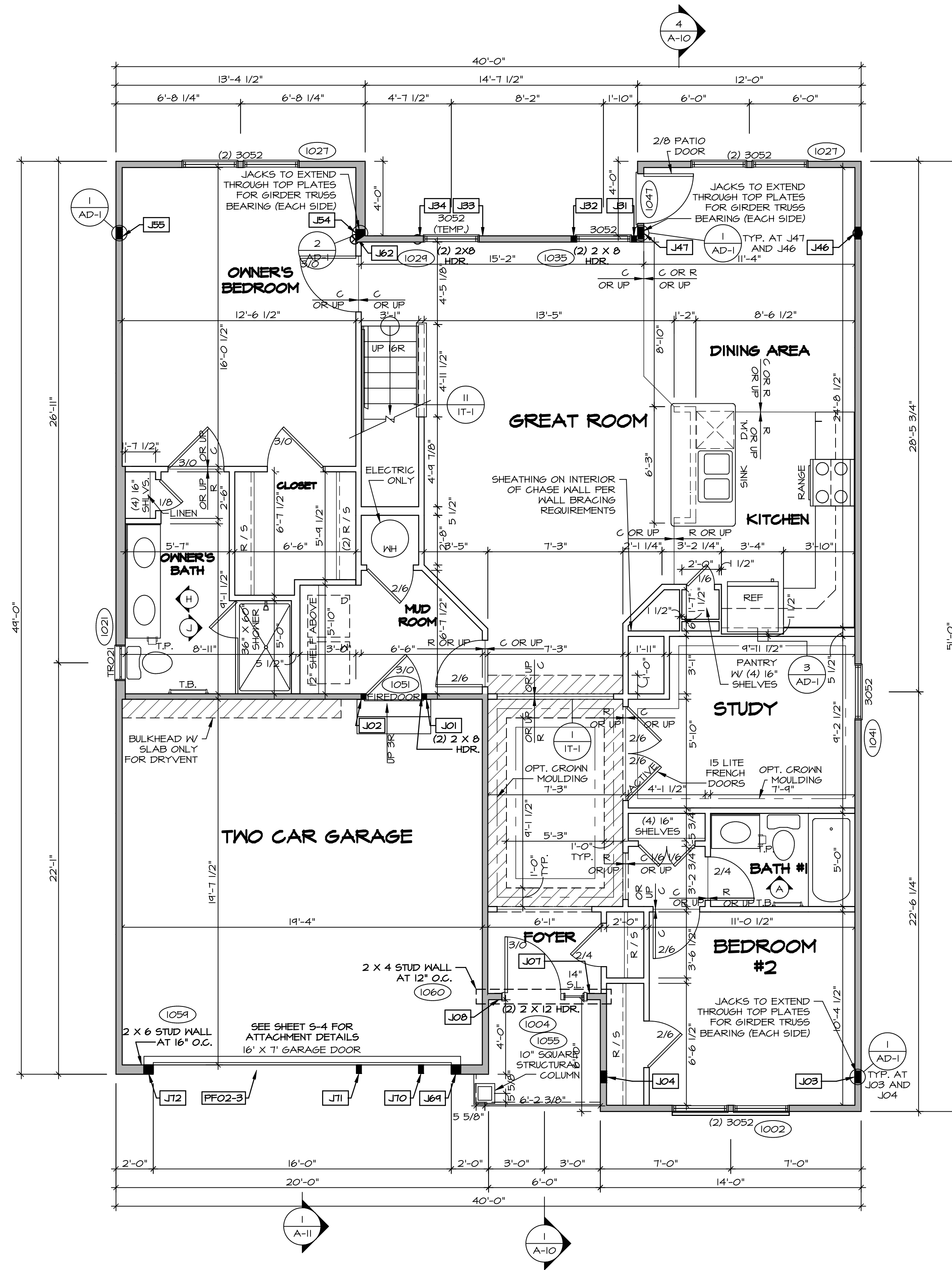
AT GARAGE:
 GYPSUM BOARD AT COMMON WALLS, CEILINGS, BEAM WRAPS AND SUPPORTS PER STANDARD DETAIL FA-1(B) FIRE ASSEMBLIES OR AS REQUIRED BY LOCAL CODE.

AT STAIRS:
 1/2" GYPSUM BOARD AT UNDERSIDE OF STAIRS AND WALLS IN CLOSET

BASEMENT WITH I-JOIST FLOOR SYSTEM ABOVE:
 WITH OPTION "SG1" - DRYWALL UNFINISHED BASEMENT CEILING AREA

NOTES:

- 1/2" GYPSUM WALL BOARD REQUIRED ON CEILING IN UNFINISHED AREAS WHEN NO SPRINKLER SYSTEM IS INSTALLED
- A MAXIMUM AREA OF 80 SQ FT MAY BE OMITTED AS NEEDED FOR INSTALLATION OF PLUMBING, ELECTRICAL, AND/OR HVAC (TYPICALLY AN 8'-0"x8'-0" CEILING SPACE ABOVE MECHANICAL AREA).
- PROVIDE FIRE BLOCKING AS REQUIRED AT PERIMETER OF ANY AREAS WHERE DRYWALL HAS BEEN OMITTED.



FIRST FLOOR PLAN
 SCALE: 1/4" = 1'-0"

REVISIONS:

REV. NO.	DATE	DESCRIPTION
1	08/07/16	TH - DRAWING ALIGNMENT

© NVR, Inc. The user hereby reserves the right to modify or amend these plans at any time without notice. These plans are not to be reproduced, changed or altered in any way without the written consent of NVR, Inc.

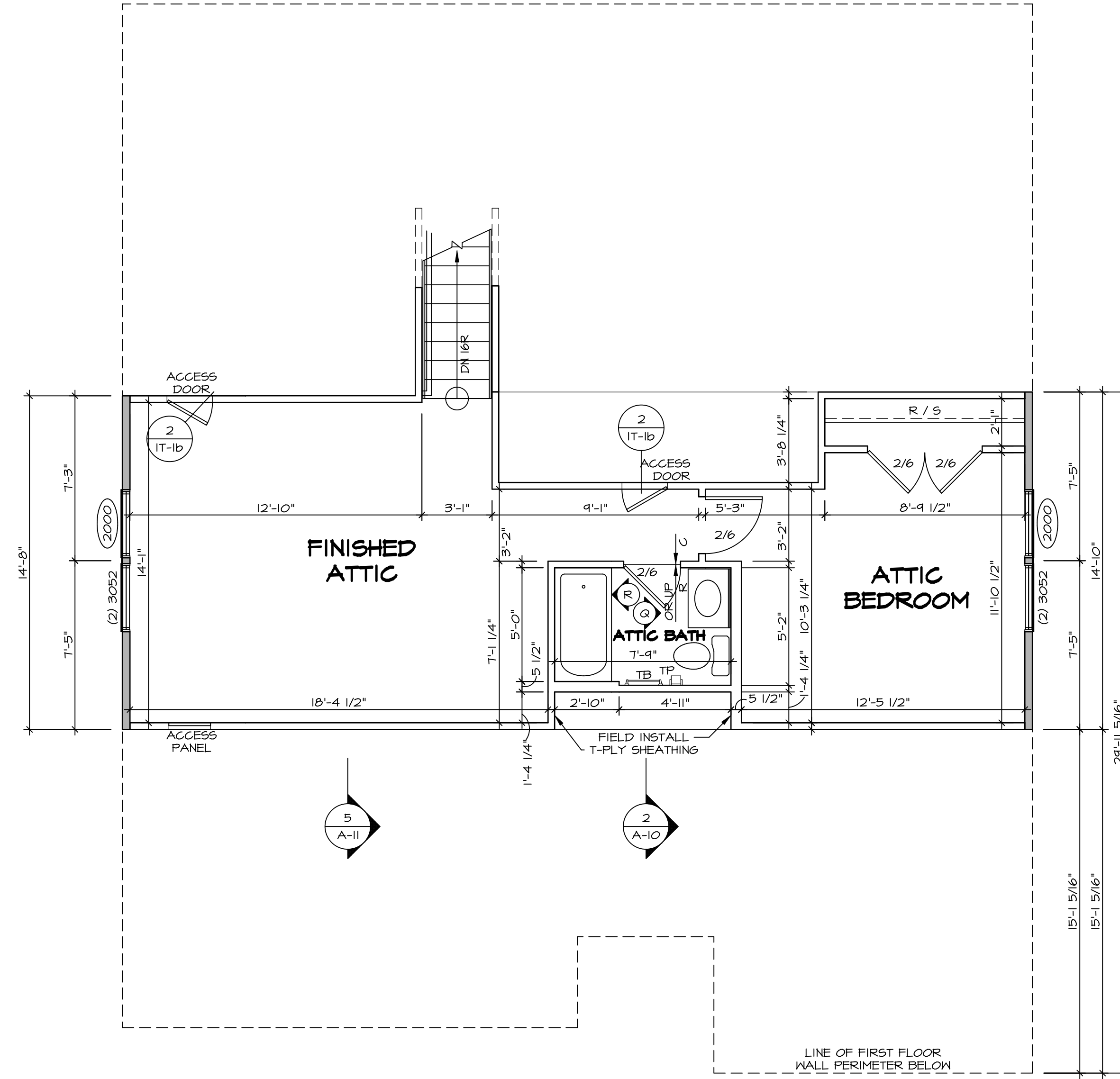
NVR
 NVR, Inc. Suite 100
 5285 Washburn Ave
 Frederick, MD 21703

SET NO. P5700
 VERSION 02
 DRAWN BY
 DATE:
 OPTION

PISA TORRE
 DRAWING TITLE
 FIRST FLOOR PLAN
 OPTION DESCRIPTION
 CORNERSTONE SPECIFICATIONS

SHEET NO. **A-7** OF 36

C:\NVR\Solves\PISA_TORRE_P5700_02\DC1-WF-M18\1372533\Sheet\101_Specific\36_A-7_PLN1-SXC-LS.dwg_09/05/19 - 9:02 am



1
A-9 **SECOND FLOOR PLAN**
SCALE: 1/4" = 1'-0"

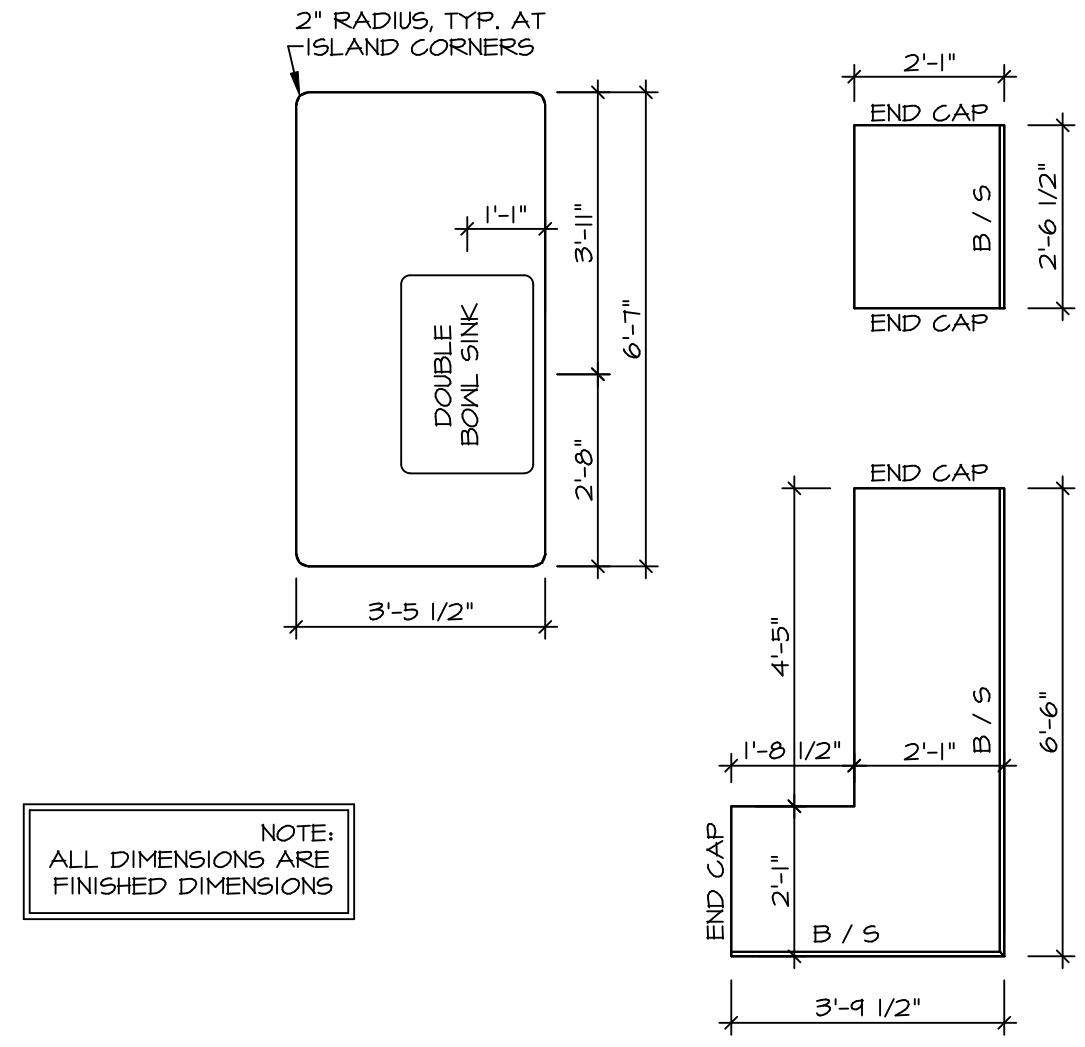
LEGEND

	BEARING WALL
	NON BEARING WALL
	INDICATES BEARING FROM POINT-LOAD ABOVE
	JACKS
	BEAM/HEADER
	PAD FOOTING
	STEEL COLUMN
	PORTAL FRAME
	JOIST/TRUSS
	LVL
	ENGINEERING PAGE NUMBER

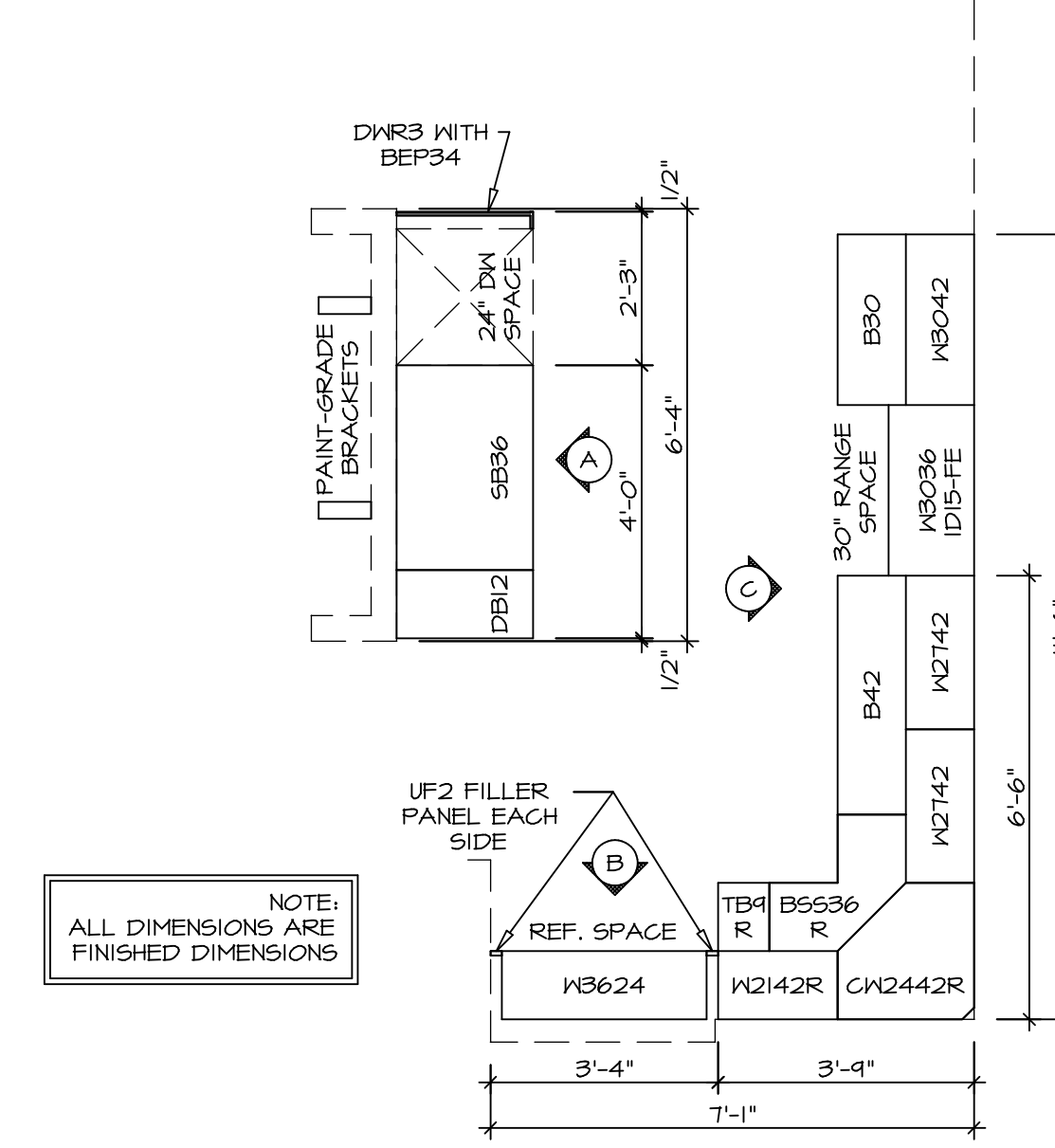
SEE FC DETAILS FOR FRAMING CONNECTORS

- FLOOR PLAN NOTES**
1. ALL HEADERS ARE (2) 2x6 w/ 2x4 WALLS OR (3) 2x6 w/ 2x6 WALLS, UNLESS OTHERWISE NOTED.
 2. ALL HEADERS TO HAVE (1) 2x4 OR 2x6 JACK EACH END, UNLESS OTHERWISE NOTED.
 3. ALL EXTERIOR WALLS TO BE 4" AND ALL INTERIOR WALLS TO BE 3 1/2", UNLESS OTHERWISE NOTED.
 4. HATCHED AREAS INDICATE DROPPED CEILINGS. ALL DROPPED CEILINGS ARE 12" UNLESS OTHERWISE NOTED.
 5. SEE BRACED WALL PANEL DETAIL SHEET FOR SPECIAL WALL FRAMING LOCATIONS AND HEADER SIZES, IF APPLICABLE.
 6. SEE STANDARD DETAIL CATEGORY "IT" SHEET(S) FOR INTERIOR TRIM DETAILS.
 7. SEE ARCHITECTURAL DETAIL SHEET "AD" FOR HOUSE SPECIFIC INTERIOR TRIM OPTION TABLE.
 8. ALL WINDOWS HAVE 7'-0 1/2" HEADER HEIGHT UNLESS OTHERWISE NOTED.

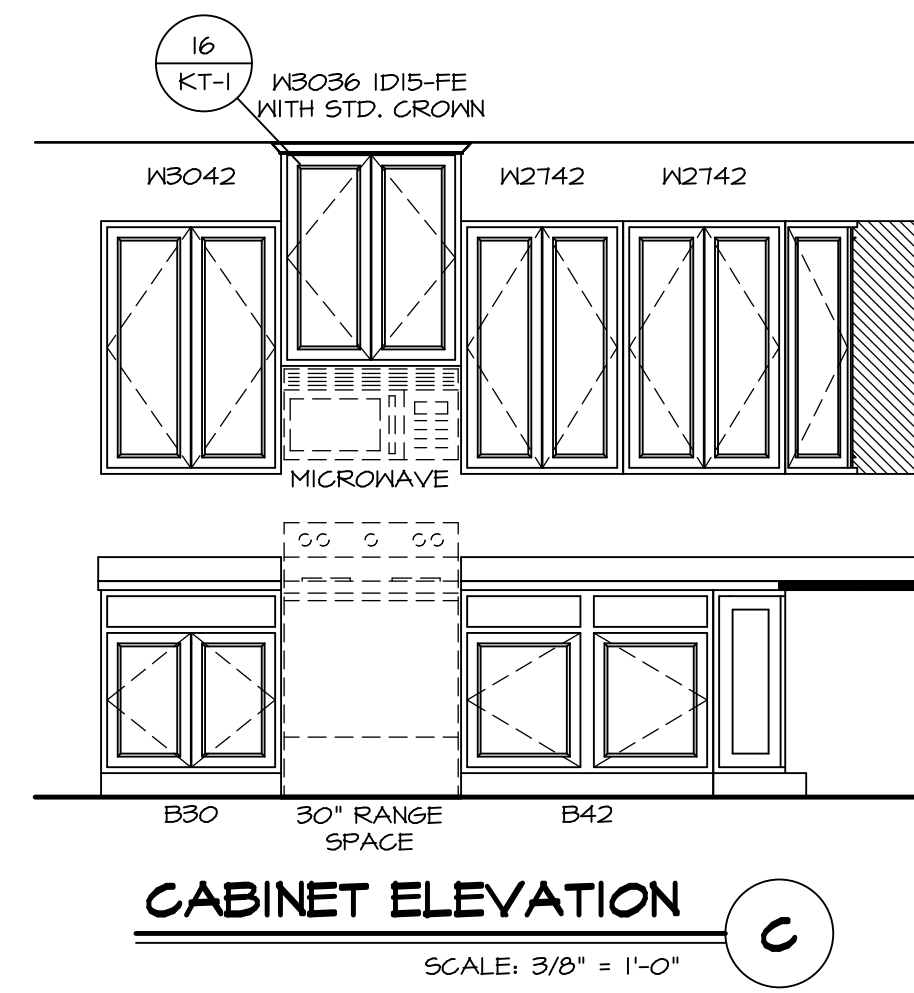
<p>SHEET NO. A-9</p>	<p>MODEL PISA TORRE</p> <p>DRAWING TITLE SECOND FLOOR PLAN</p> <p>OPTION DESCRIPTION 4-4</p>	<p>SET NO. PSTCO</p> <p>VERSION 02</p> <p>DRAWN BY</p> <p>DATE:</p> <p>OPTION</p>	<p>REMARKS</p> <p>08/07/16 TH - DRAWING ALIGNMENT</p> <p>1</p>
<p>NVR NVR, Inc. Suite 100 5285 Washington Blvd. Frederick, MD 21703</p>			
<p>© NVR, Inc. expressly reserves the right to modify these plans without notice. These plans are not to be reproduced, changed or altered in any way without the written consent of NVR, Inc.</p>			
<p>C:\NVR\Solves\PISA_TORRE_PSTCO_02\DCY-WF-M18\1372533\Sheet\44_A-9_PLN2_LS.dwg 09/05/19 - 9:02 am</p>			



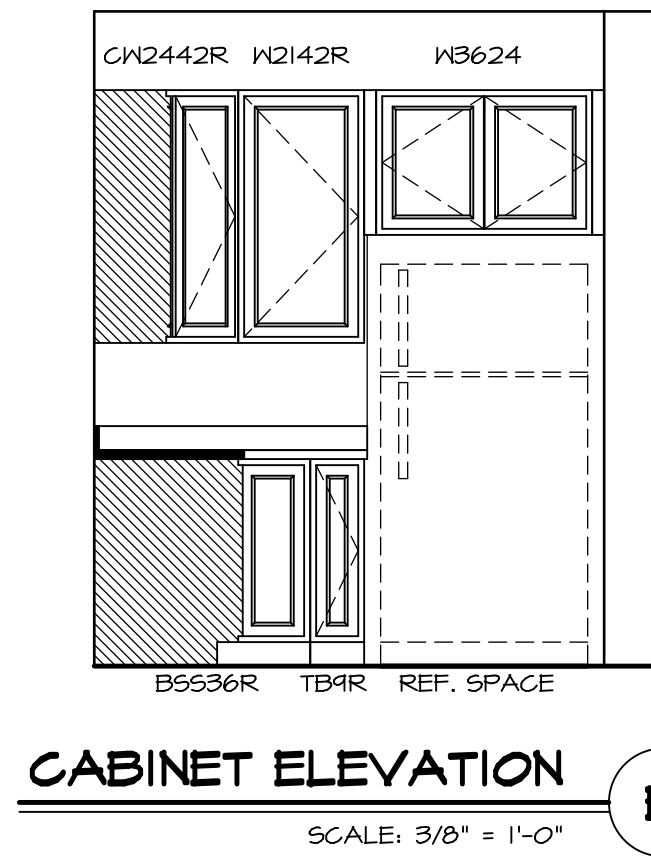
**(KT-3209)
COUNTERTOP LAYOUT**
SCALE: 3/8" = 1'-0" A-13



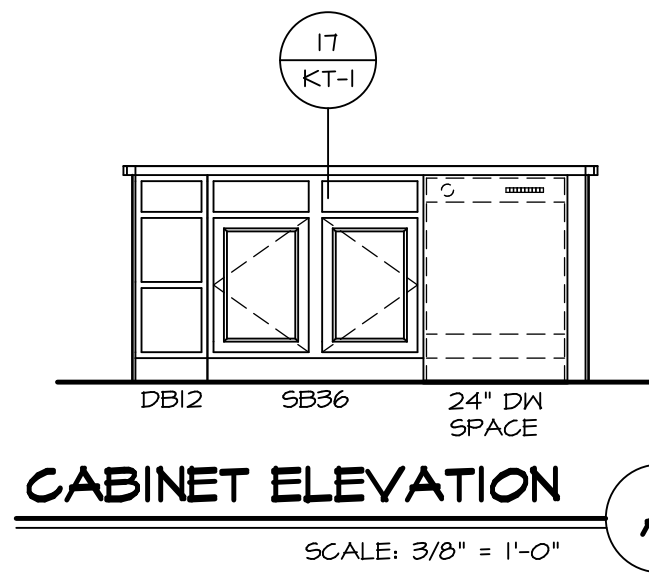
**(KC-3209)
CABINET LAYOUT**
SCALE: 3/8" = 1'-0" A-13



CABINET ELEVATION C
SCALE: 3/8" = 1'-0"



CABINET ELEVATION B
SCALE: 3/8" = 1'-0"

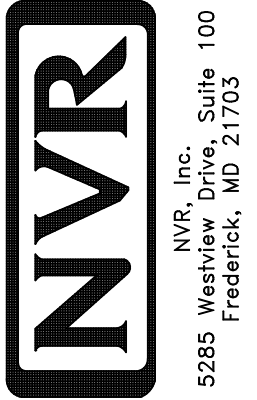


CABINET ELEVATION A
SCALE: 3/8" = 1'-0"

SHEET NO. **A-13**
MODEL **PISA TORRE**
DRAWING TITLE **KITCHENS**
OPTION DESCRIPTION

48

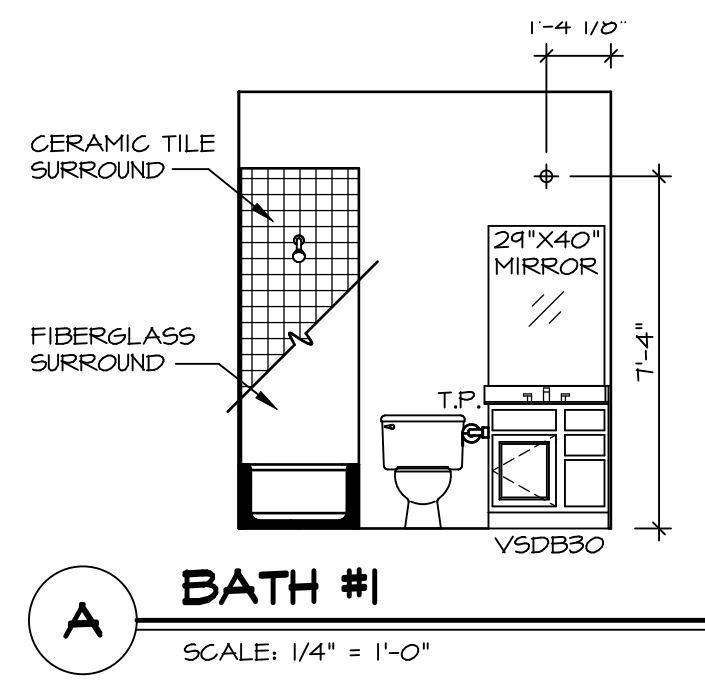
SET NO. **PS700**
VERSION **02**
DRAWN BY **BDH**
DATE: **3/24/15**
OPTION



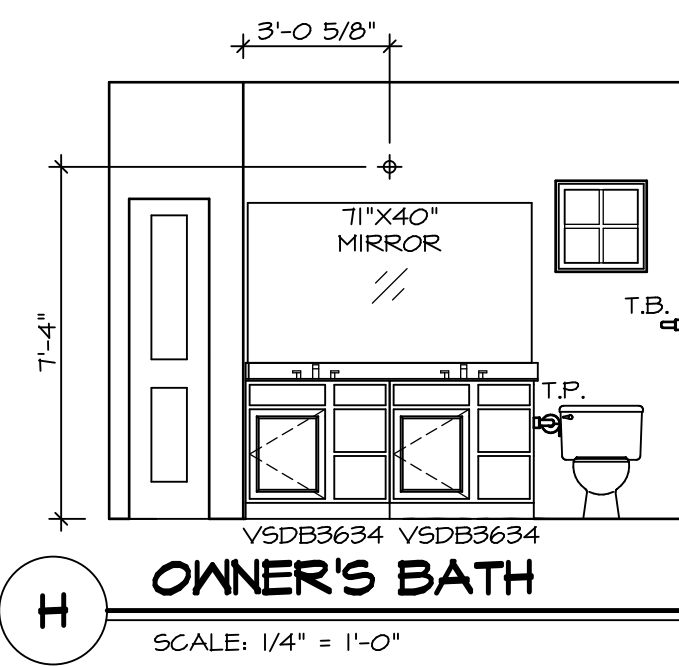
© NVR, Inc. expressly reserves the right to modify the product and drawings at any time without notice. In these plans, dimensions are not to be reproduced, changed or altered in any way without the written consent of NVR, Inc.

REV. NO. DATE

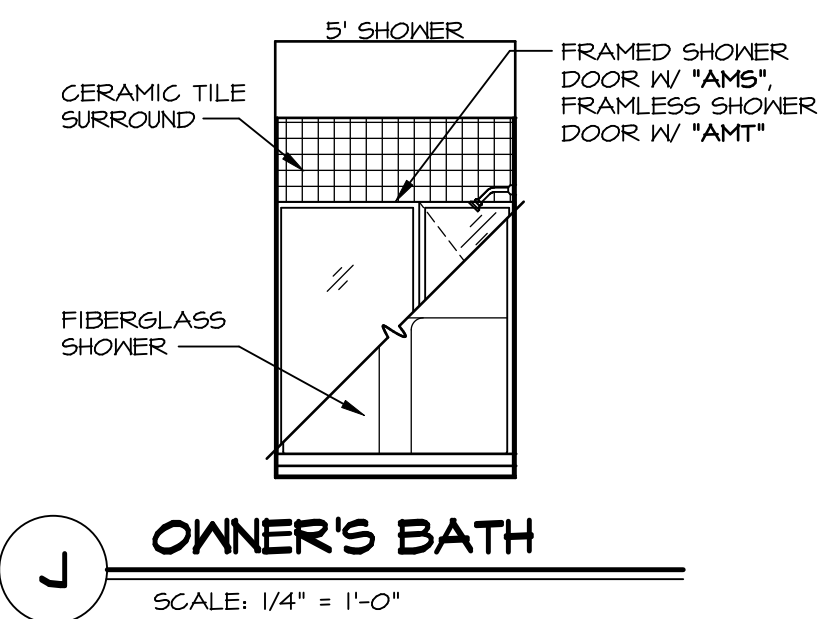
REMARKS



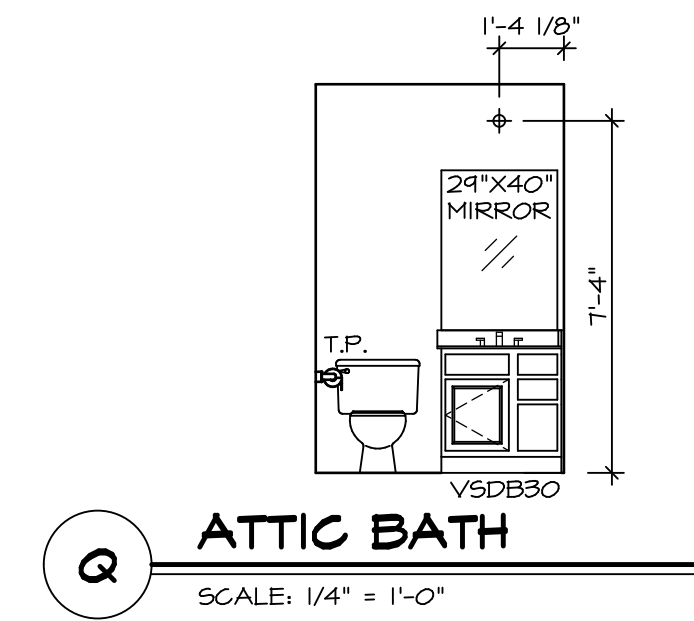
A BATH #1
SCALE: 1/4" = 1'-0"



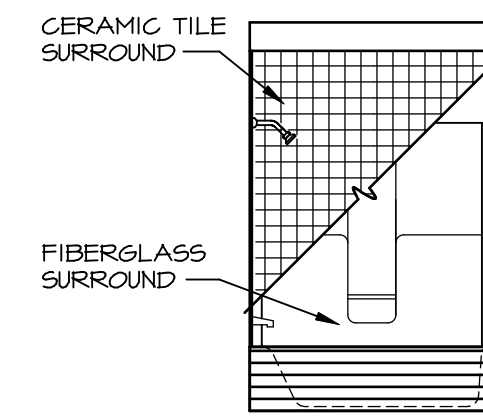
H OWNER'S BATH
SCALE: 1/4" = 1'-0"



J OWNER'S BATH
SCALE: 1/4" = 1'-0"



Q ATTIC BATH
SCALE: 1/4" = 1'-0"



R ATTIC BATH
SCALE: 1/4" = 1'-0"

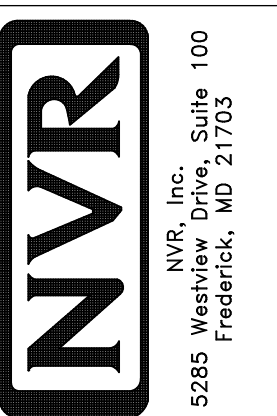
NOTES:

1. TEMPERED GLASS SHOWER ENCLOSURE WITH SWING DOOR OR OPTIONAL SLIDING DOOR BY DIVISION
2. TUB ACCESS PANELS PROVIDED AS NEEDED, ALL MATERIALS BY DIVISION
3. REFER TO SHEET IT-2 FOR TUB AND SHOWER DETAILS.
4. ALL VSD324-42 DRAWERS TO BE SET ON RIGHT HAND.
5. BATH ELEVATIONS ARE SHOWN PER PLAN.

NOTES
• WINDOWS VARY PER OPTION.

REV. NO.	DATE	REMARKS
1	08/07/16	TM - DRAWING ALIGNMENT

© NVR, Inc. expressly reserves the right to modify or change any part of these plans. These plans are not to be reproduced, changed or altered in any way without the written consent of NVR, Inc.



SET NO.	PSTCO
VERSION	02
DRAWN BY	
DATE:	
OPTION	

SHEET NO.	MODEL
A-14	PISA TORRE
	DRAWING TITLE
	BATH ELEVATIONS
	OPTION DESCRIPTION
53	