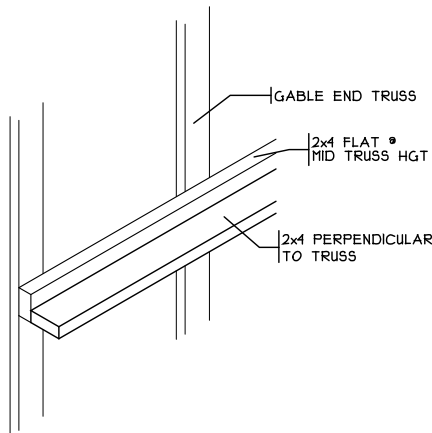
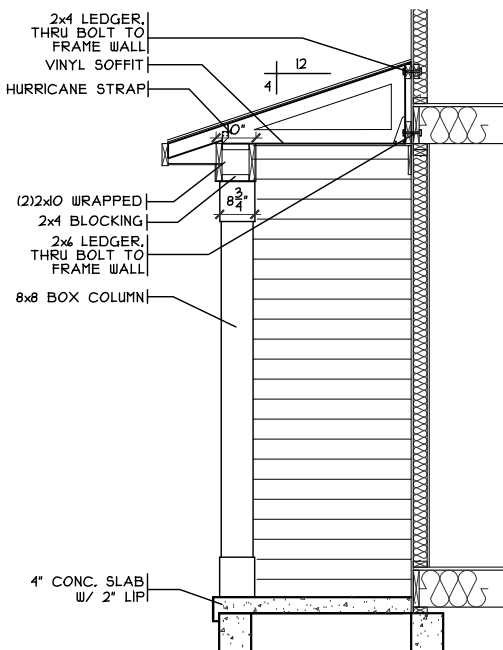


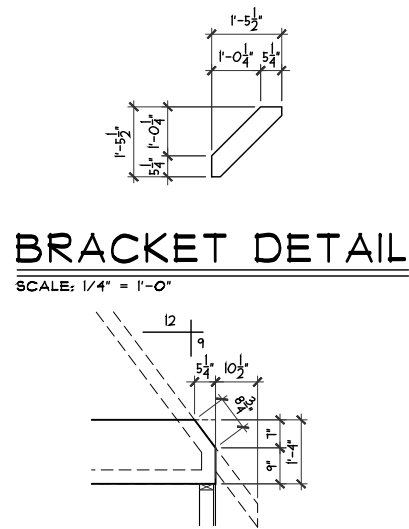
**STONE BASE DETAIL**  
SCALE: 1/8" = 1'-0"



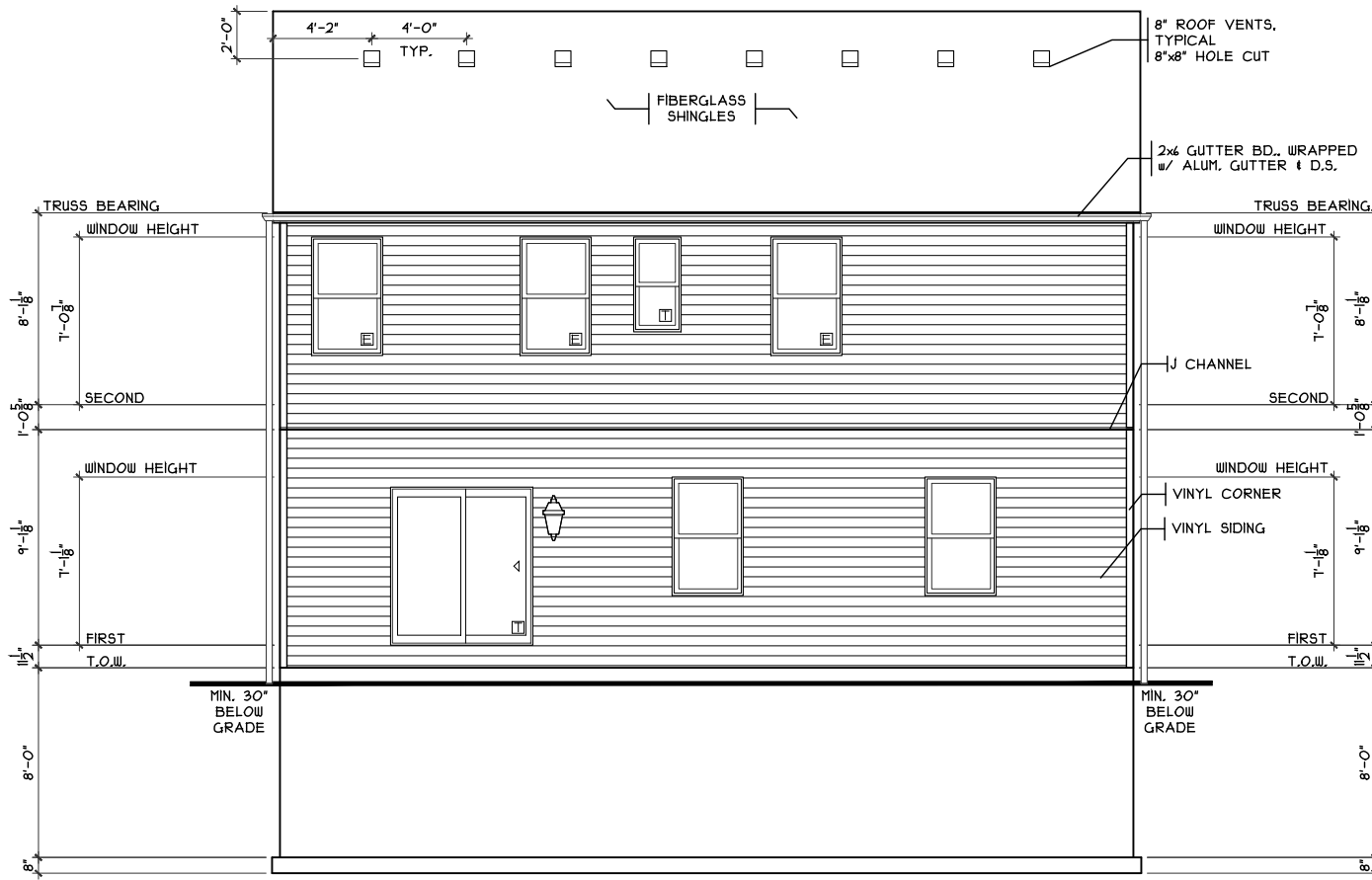
**STIFF BACK DETAIL**  
SCALE: 3/8" = 1'-0"



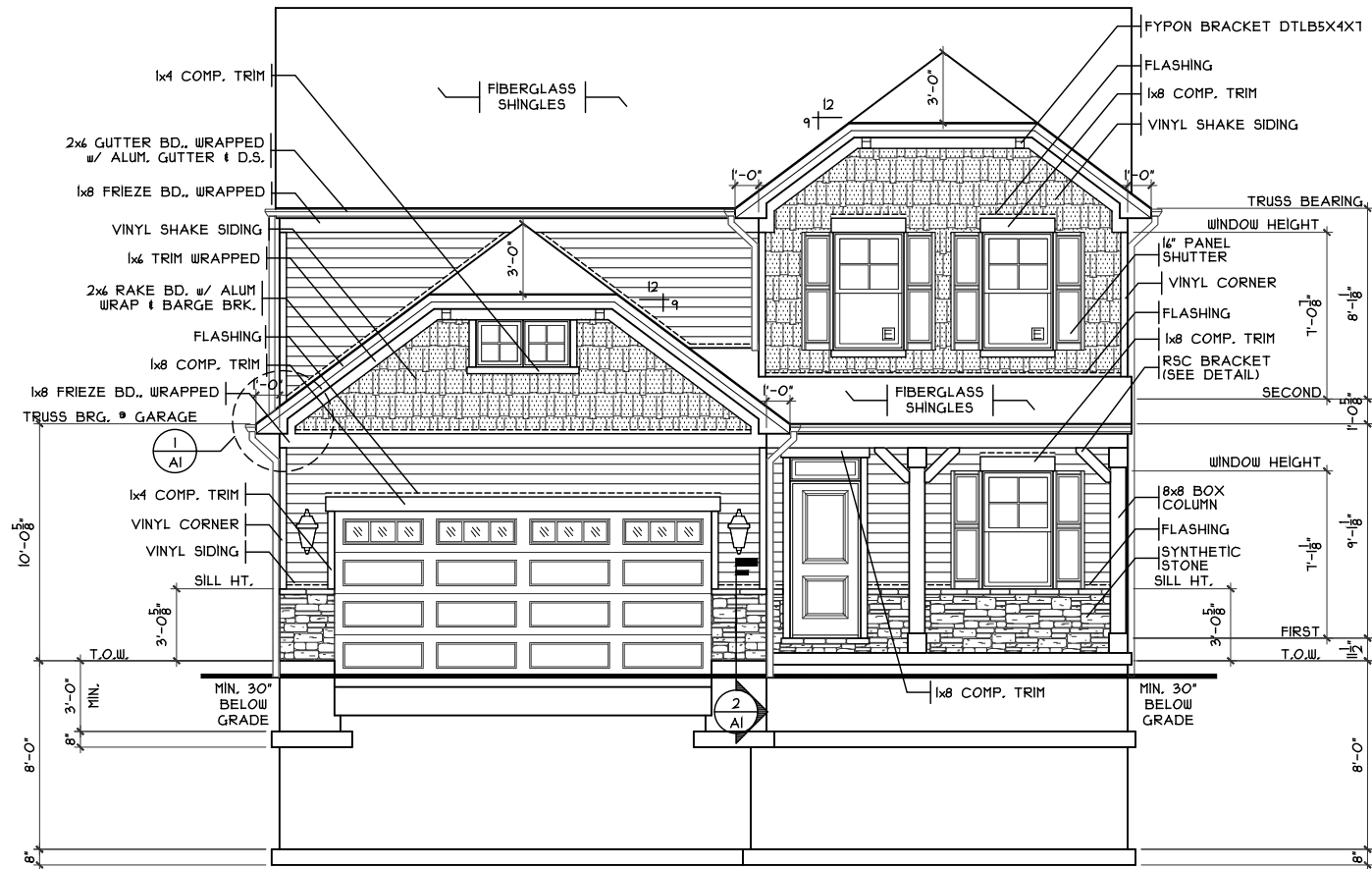
**FRONT PORCH DETAIL**  
SCALE: 1/4" = 1'-0"



**M.L. CUT DETAIL**  
SCALE: 3/4" = 1'-0"



**REAR ELEVATION**  
SCALE: 1/8" = 1'-0"

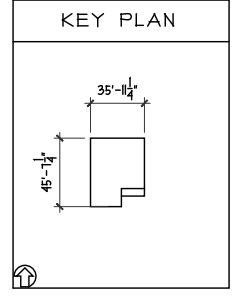


**FRONT ELEVATION**  
SCALE: 1/8" = 1'-0"

SHEET INDEX	
SHT#	DESCRIPTION
A1	Front and Rear Elevations
A1a	Left and Right Elevations
A2	Foundation Plan
A3	First Floor Plan
A4	Second Floor Plan
A5	Typical Wall Sections/Stair Section
A6	Typical Framing Details (Aluminum)
G1	General Notes

NOTE:  
PLANS PRINTED ON 24x36 SHEETS TO BE SCALABLE AT FULL SCALE, 1/4" = 1'-0"  
PLANS PRINTED ON 11x17 SHEETS TO BE SCALABLE AT HALF SCALE, 1/8" = 1'-0"

PLAN INFO. 252209B4	
4	BDRMS
2.5	BATH
4	CAR GARAGE
1ST FLR. CLG.	
SQUARE FOOTAGE	
TOTAL	2209
FIRST	1015
SECOND	194
LOW. LEV. FIN.	N/A
LOWER (SLAB)	428
GAR. (SLAB)	406



OPTIONS	

Front & Rear Elevations  
WV-31  
Proposed Residence:  
Market Home  
1219 Waterbury Ct.  
Waterbury Village Lot #29  
Warren County

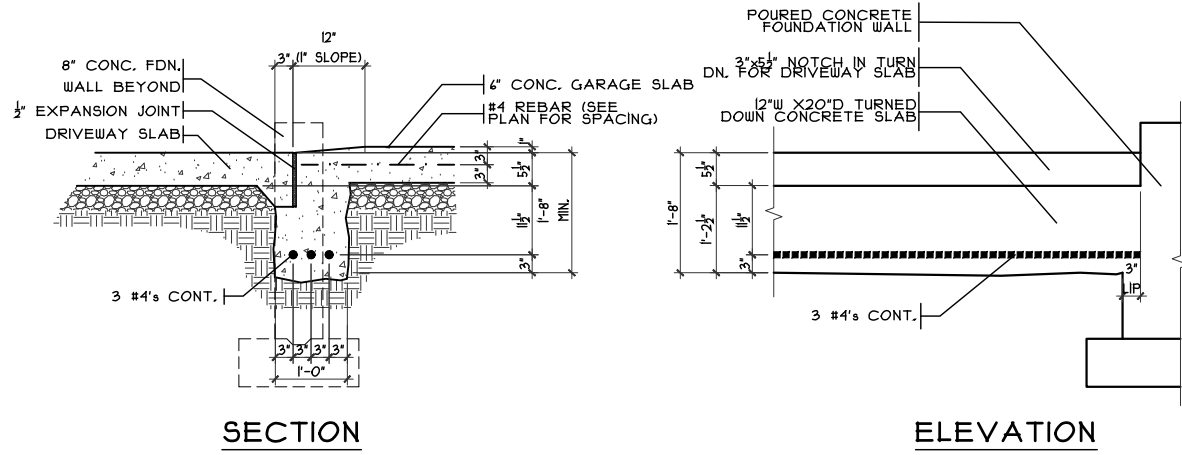
CRISTO HOMES  
7944 Tyers Place Blvd.  
West Chester, OH 45389  
513.755.0570

Plan: Goldbourn  
Date: 8.27.2019  
Drawn: MA  
Scale: As Noted  
Revised: 10.27.2020  
Sheet: 1 of 15

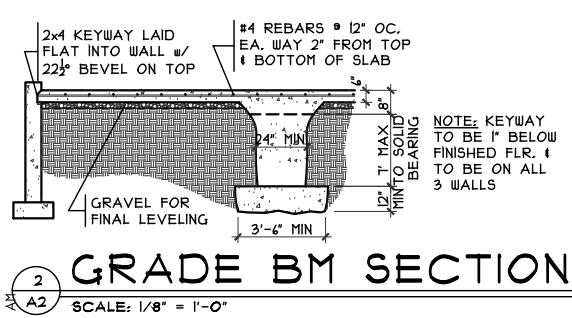
Issue Dates

Cristo Homes reserves all property rights in these plans. These plans are not to be reproduced, changed, or copied in any manner. They are not to be given to a third party, either in full or in part, without first receiving written permission from Cristo Homes. In the event these plans are used by a third party, Cristo Homes shall be held harmless.

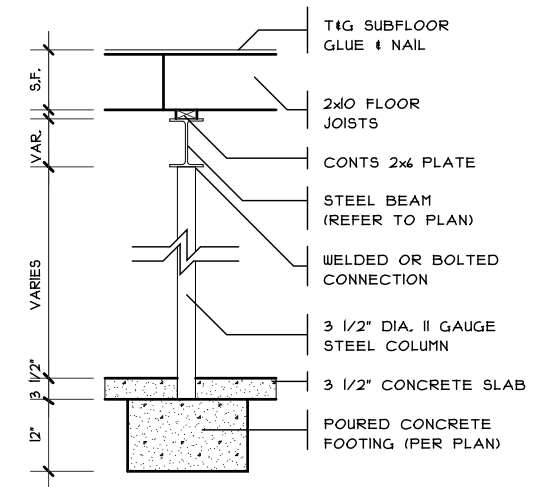
A1



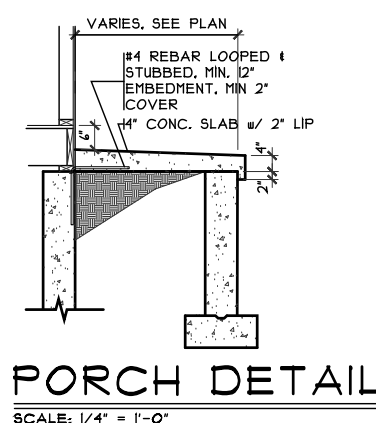
**GARAGE DOOR GRADE BM**  
SCALE: 3/8" = 1'-0"



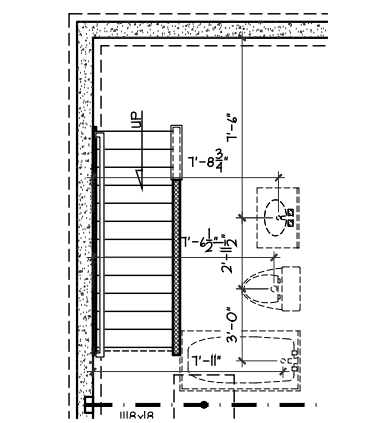
**GRADE BM SECTION**  
SCALE: 1/8" = 1'-0"



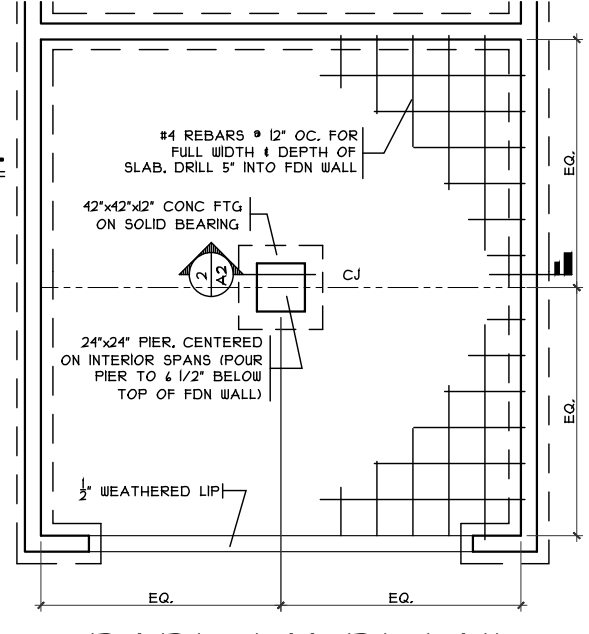
**COLUMN DETAIL**  
SCALE: 1/4" = 1'-0"



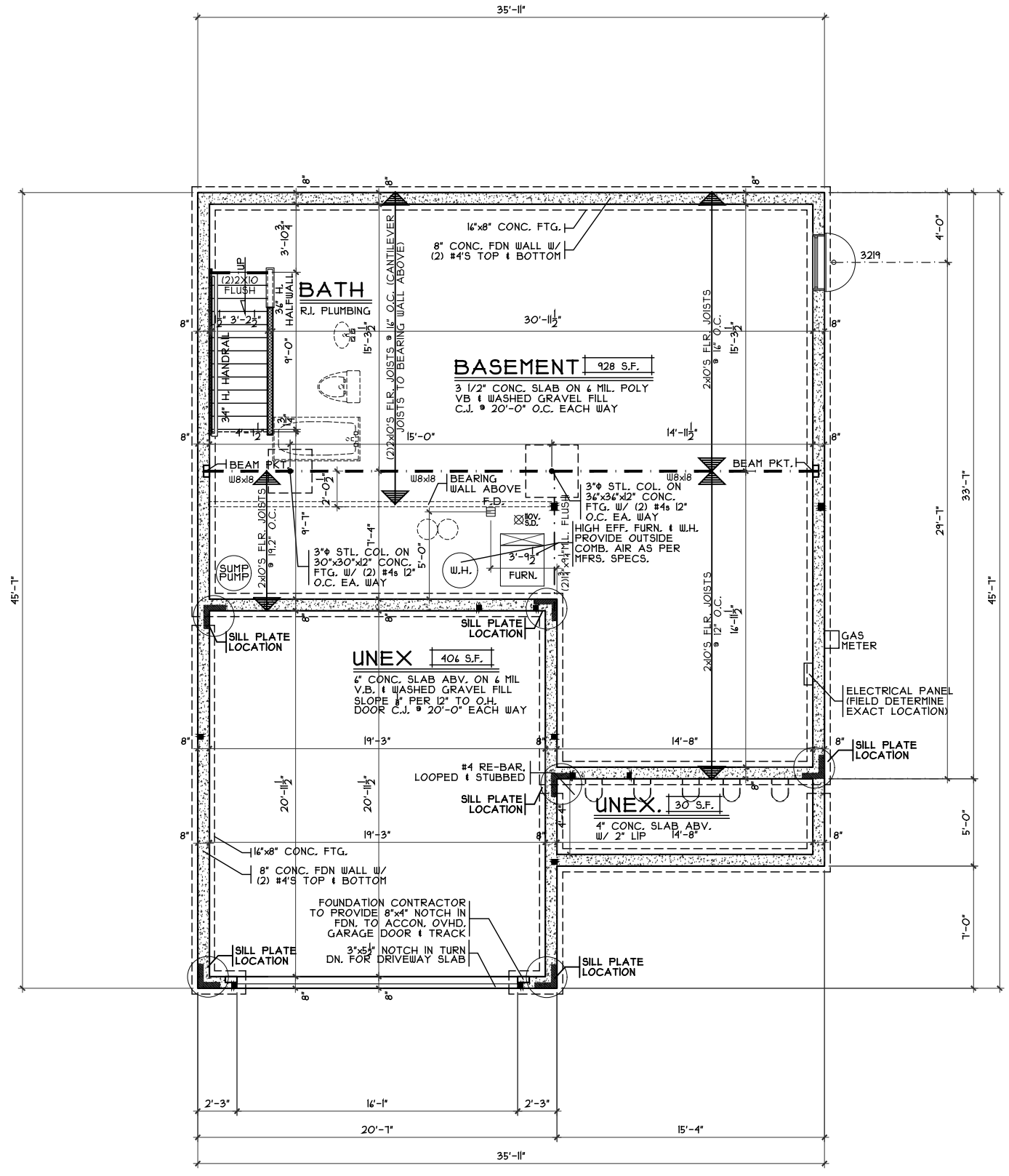
**PORCH DETAIL**  
SCALE: 1/4" = 1'-0"



**PLUMBING DIMS**  
SCALE: 1/4" = 1'-0"



**GRADE BM DETAIL**  
SCALE: 1/8" = 1'-0"



**FOUNDATION PLAN**  
SCALE: 1/8" = 1'-0"

OPTIONS

Foundation Plan

Plan: Goldbourn  
Date: 8.27.2019  
Drawn: MA  
Scale: As Noted  
Revised: 10.27.2020  
Sheet: 3 of 15



7894 A Tyers Place Blvd.  
West Chester, OH 45389  
513.755.0570

Proposed Residence:

Market Home  
1219 Waterbury Ct.  
Waterbury Village Lot #29

Goldbourn - B2 - Vinyl

Warren County  
Carlisle

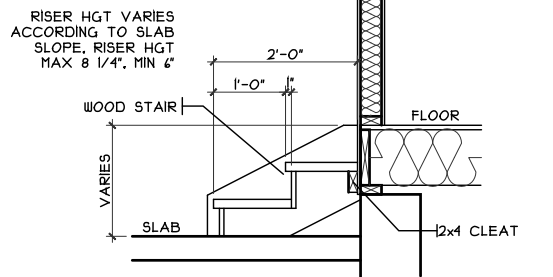
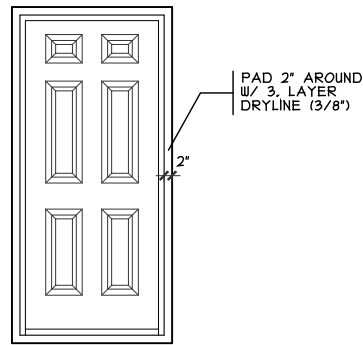
Issue Dates

Cristo Homes reserves all property rights in these plans. These plans are not to be reproduced, changed, or copied in any manner. They are not to be given to a third party, either in full or in part, without first receiving written permission from Cristo Homes. In the event these plans are used by a third party, Cristo Homes shall be held harmless.

A2

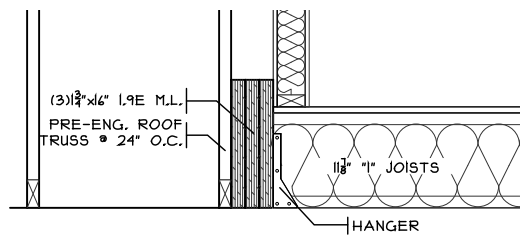
### DOOR FRAMING DETAIL

SCALE: 1/4" = 1'-0"



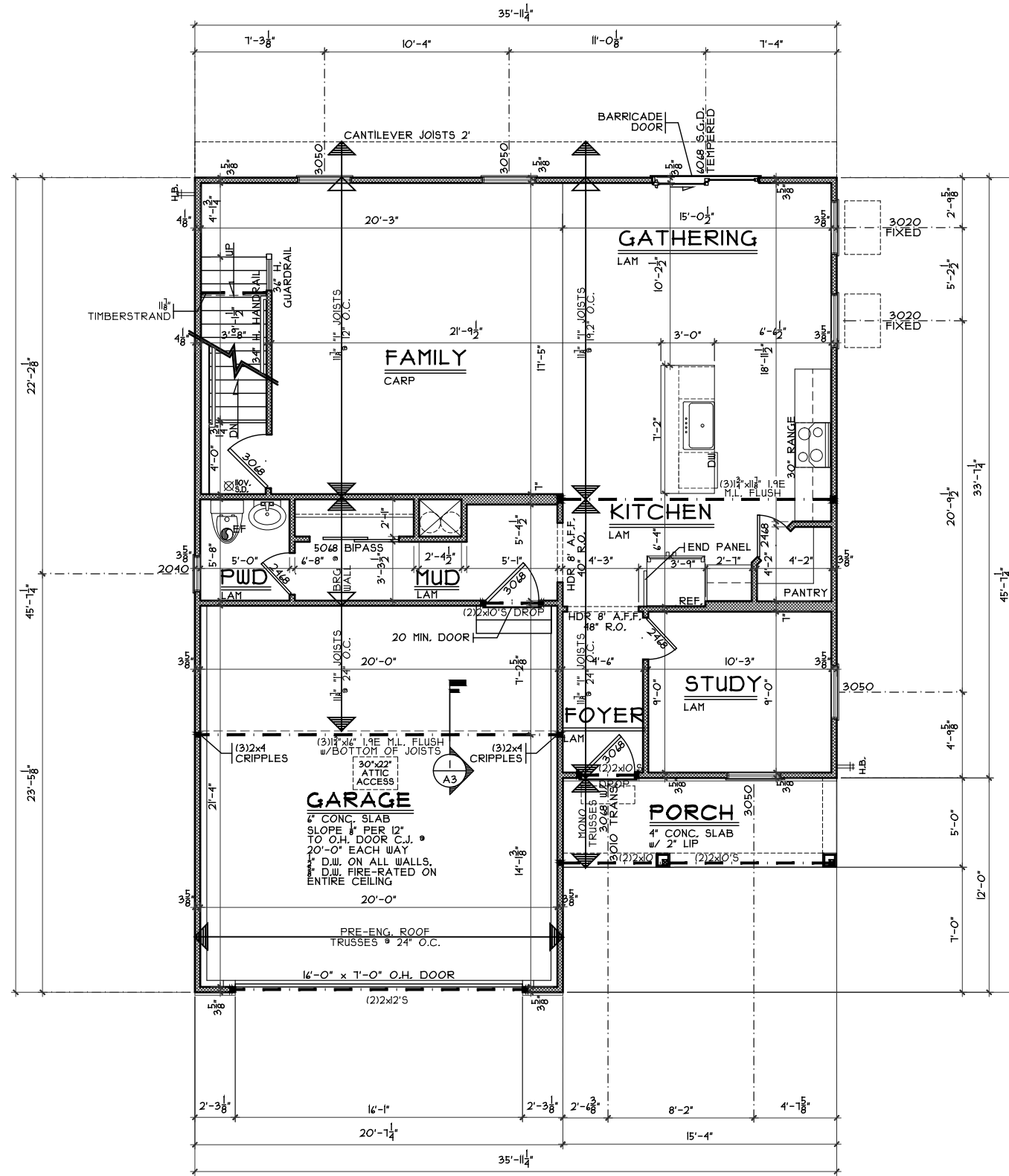
### GARAGE STAIRS DETAIL

SCALE: 1/8" = 1'-0"



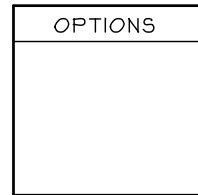
### GARAGE DETAIL

SCALE: 1/2" = 1'-0"



### FIRST FLOOR PLAN

SCALE: 1/8" = 1'-0" 1015 SQ. FT.



First Floor Plan

Plan: Goldbourne  
 Date: 8.27.2019  
 Drawn: MA  
 Scale: As Noted  
 Revised: 10.27.2020  
 Sheet: 5 of 15

WV-31

Proposed Residence:

Market Home  
 1219 Waterbury Ct.  
 Waterbury Village Lot #29

Goldbourne - B2 - Vinyl

Cristo Homes reserves all property rights in these plans. These plans are not to be reproduced, changed, or copied in any manner. They are not to be given to a third party, either in full or in part, without first receiving written permission from Cristo Homes. In the event these plans are used by a third party, Cristo Homes shall be held harmless.

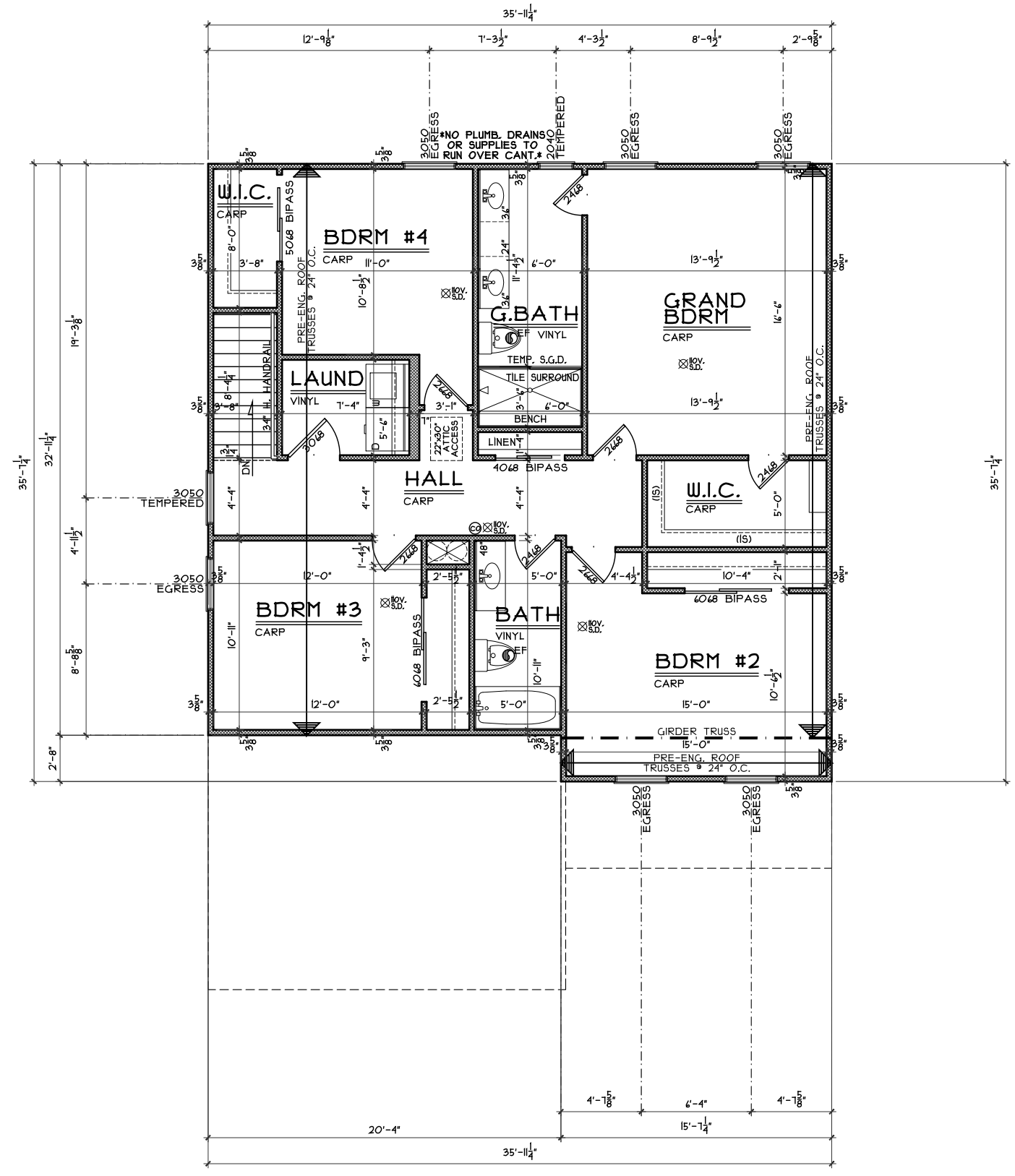
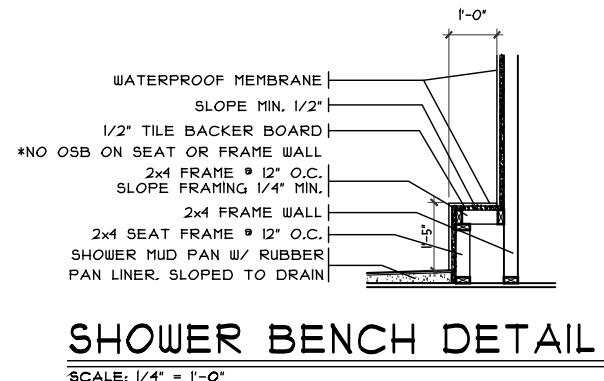
Issue Dates


Carlisle  
 Warren County



7894A Tyers Place Blvd.  
 West Chester, OH 45689  
 513.755.0570 • www.cristohomes.com

A3



**SECOND FLOOR PLAN**  
SCALE: 1/8" = 1'-0" 1194 SQ. FT.

OPTIONS

Second Floor Plan

Plan: Goldbourne  
Date: 8.27.2019  
Drawn: MA  
Scale: As Noted  
Revised: 10.27.2020  
Sheet: 6 of 15



Proposed Residence:

Market Home  
1219 Waterbuy Ct.  
Waterbury Village Lot #29

Goldbourne - B2 - Vinyl

Carlsle  
Warren County

Issue Dates


A4